

D

C

B

A

D

C

B

A

1. BOARD FABRICATION METHODS MUST COMPLY WITH:
FABRICATE IN ACCORDANCE WITH IPC-6018B, per IPC-6011, CLASS 2.
2. ARTWORK FORMAT: GERBER 274X
GERBER DATA SUPPLIED WITH DESIRED FINAL TRACE WIDTHS. PROCESS
COMPENSATION TRACE WIDTH ADJUSTMENTS TO BE DONE BY PCB FABRICATOR
3. MATERIAL:
NUMBER OF LAYERS: 2 LAYERS
METAL 1 (TOP): 1.0oz.
CORE 1:□ ROGERS 6035HTC, 0.010in. THICK
METAL 2 (BOTTOM): 1.0oz.
SOLDERMASK TOP: LPI (LIQUID PHOTO-IMAGEABLE), GREEN.
 OR LDI (LASER DIRECT IMAGEABLE), GREEN.
 MAX FINISH THICKNESS OF SOLDERMASK TO BE 0.001in.
SILKSCREEN TOP: HIGH TEMPERATURE, NON-CONDUCTIVE, WHITE EPOXY BASED INK.
4. FINISH PLATING:
METAL 1 (TOP) AND METAL 2 (BOTTOM):
ENIG (ELECTROLESS NICKEL/IMMERSION GOLD):
ELECTROLESS NICKEL per IPC-4552, 118 - 236µin. (3 - 6µm)
IMMERSION GOLD per IPC-4552, 3 - 10 µin (0.08 - 0.25µm)
5. FINISHED BOARD THICKNESS: (0.013in.)
6. COPPER IS PULLED BACK 0.003in. GROUND PLANE ONLY FROM EDGE OF BOARD ON
METAL 1 (TOP) AND METAL 2 (BOTTOM). NO PULL BACK ON TAPER.
THESE VALUES ARE CRITICAL AND MUST BE INSPECTED.
7. TOLERANCE: PC BOARD OUTLINE: ±0.002in.
8. BURRS SHALL NOT EXCEED 0.002in.
9. VIA PLATING/FILLING:
A. ALL VIAS TO BE EPOXY-FILLED, SAN-EI KAGAKU PHP-900 NON-CONDUCTIVE EPOXY, PLANARIZED.
B. ALL OTHER PLATED THRU HOLES TO BE PLATED TO 0.0014 ±0.0004in. MIN. THICKNESS.
10. METAL 1 TOP AND METAL 2 BOTTOM SHALL BE PLANARIZED AFTER PLATING HOLES SHUT.
MAX ALLOWABLE NEGATIVE FEATURE 0.0008in. MAX ALLOWABLE POSITIVE FEATURE 0.0003in.
11. CONDUCTOR WIDTHS AND SPACING TO BE WITHIN 0.003in. OF CAD DATABASE.
12. SOLDERMASK IN PLATED-THRU HOLES IS ACCEPTABLE AS LONG AS IT DOES NOT EXIST ON BACKSIDE OF BOARD.
13. ALL HOLES TO BE LOCATED WITHIN ±0.001 OF CAD DATABASE.
14. NO VENDOR MARKING OR SERIALIZATION ALLOWED.
15. DELIVER BOARDS BAGGED AS: SINGLES
16. NO ELECTRICAL TEST NEEDED.

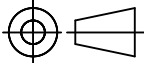
Drill Table

Symbol	Count	Hole Size	Plated	Via / Pad
A	331	0.010	Plated	Via
C	4	0.078	Plated	Pad
D	14	0.106	Non-Plated	Pad
B	2	0.120	Non-Plated	Pad
	351 Total			

THIS DOCUMENT IS CONFIDENTIAL AND REPRESENTS
PROPRIETARY INFORMATION, THE PROPERTY OF QORVO
AND SHALL NOT BE REPRODUCED IN ANY MANNER
NOR USED FOR ANY PURPOSE WHATSOEVER,
EXCEPT AS SPECIFIED IN WRITING BY QORVO

UNLESS OTHERWISE
SPECIFIED: DIMENSIONS
ARE IN INCHES

TOLERANCES
.XX = ±.01
.XXX = ±.005
.XXXX = ±.0010
ANGLES = ± 0.5°
INTERPRET DRAWING
PER ANSI/ASME Y14.5 - 2009



THIRD ANGLE PROJECTION
DO NOT SCALE DRAWING


SAP NO. 285070

APPROVAL AND RELEASE
RECORDS MAINTAINED IN PDE

DESIGNER T. THOMAS
ENGR. Z. DU

PDE CONTROLLED

CAGE CODE 1CVM1



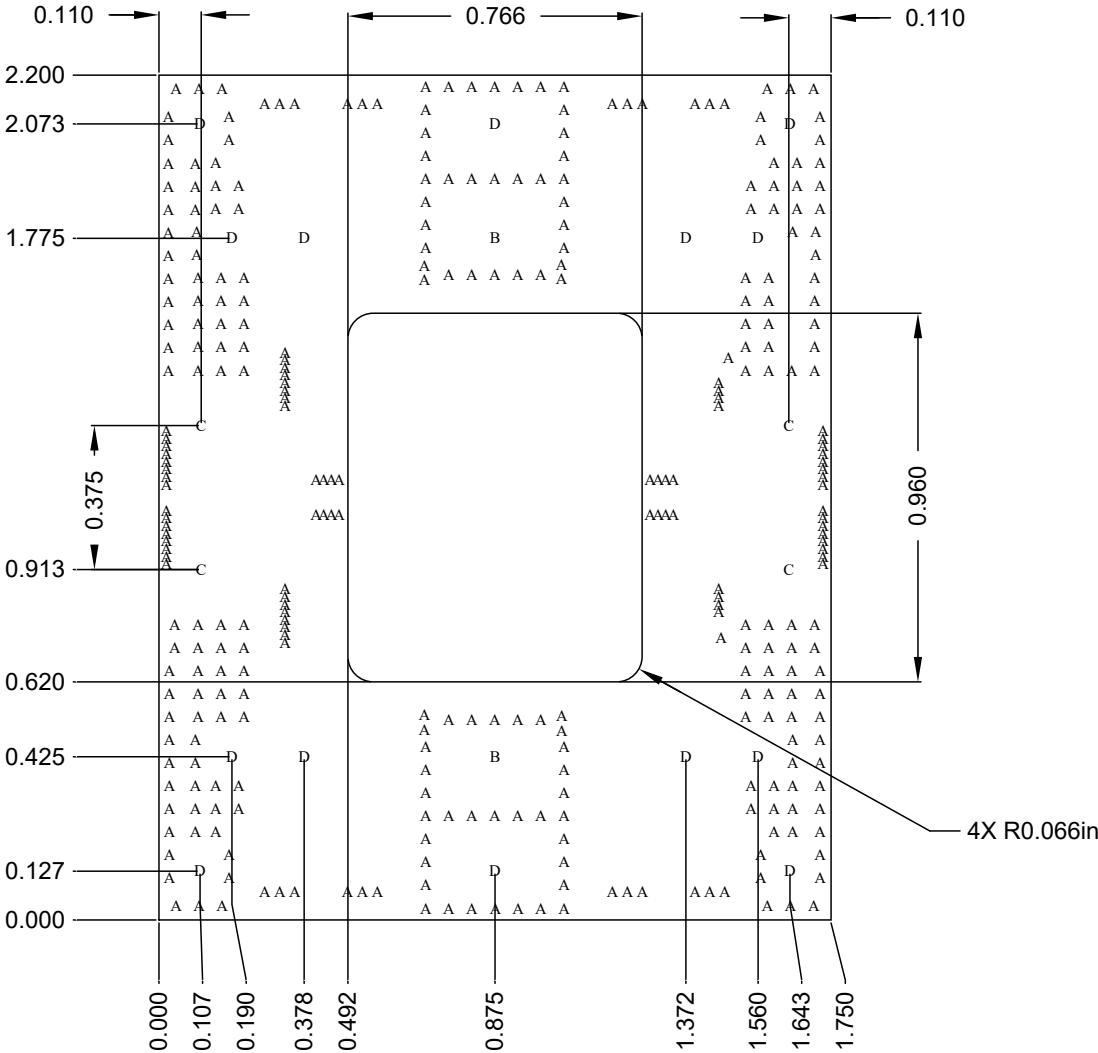
TITLE:
PCB FABRICATION,
QPM2239

SIZE DWG. NO.
B QPM2239-4000

REV.
A

SCALE: 1:1 SHEET 1 OF 3

REVISION HISTORY			
REV	DESCRIPTION	DATE	APPROVAL
A	NEW RELEASE	05-15-18	T. THOMAS



D

D

C

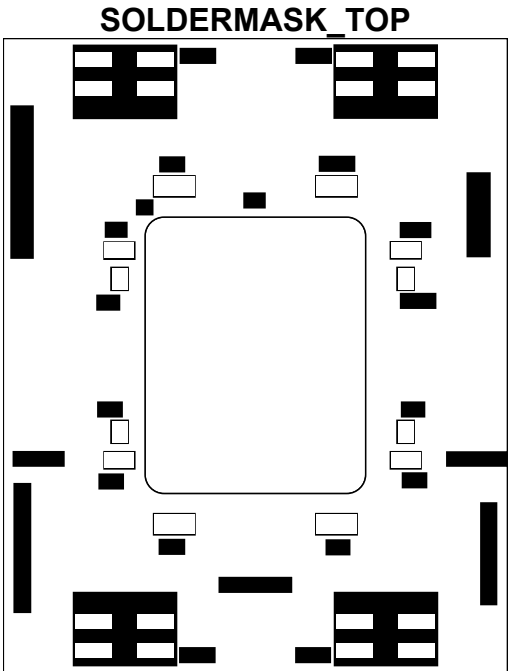
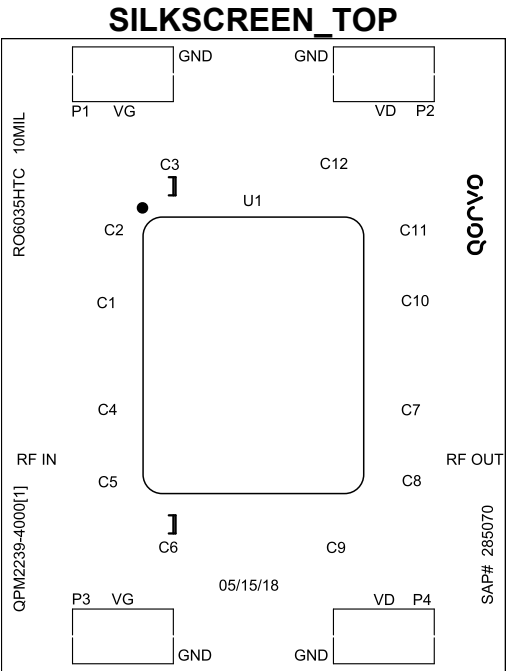
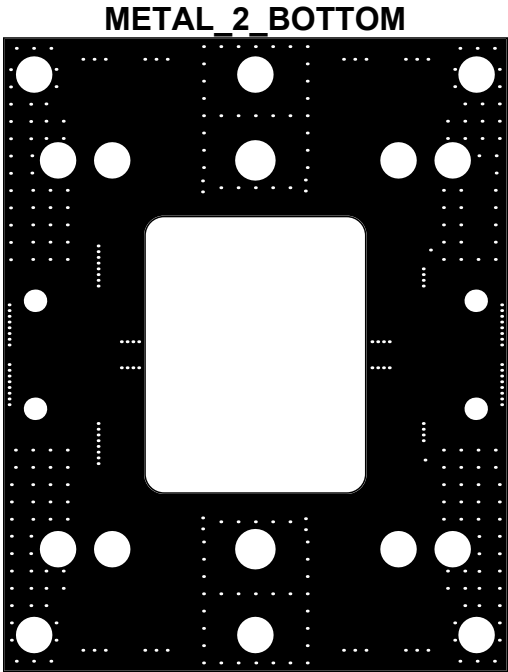
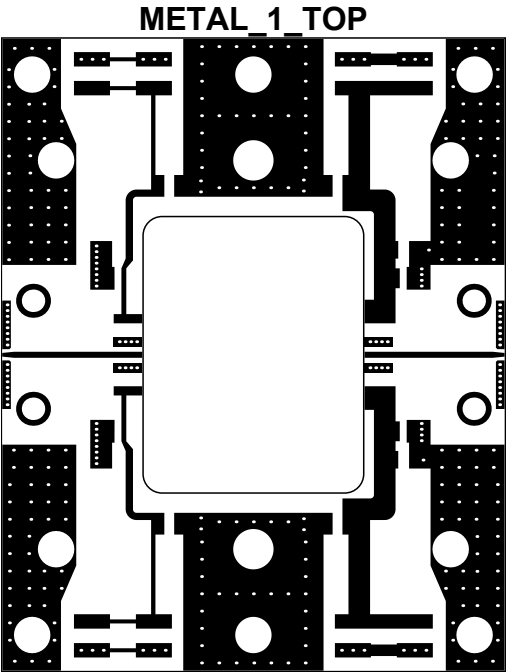
C

B

B

A

A



LAYER STACK LEGEND (SEE NOTE 3 FOR MATERIAL)

Material	Layer	Thickness	Dielectric Material	Type
	SILKSCREEN_TOP			Legend
Surface Material	SOLDERMASK_TOP	0.0004in	Solder Resist	Solder Mask
Copper	METAL_1_TOP	0.0014in		Signal
Core		0.0100in	6035HTC	Dielectric
Copper	METAL_2_BOTTOM	0.0014in		Signal
Total thickness: 0.013in				

THIS DOCUMENT IS CONFIDENTIAL AND REPRESENTS PROPRIETARY INFORMATION, THE PROPERTY OF QORVO AND SHALL NOT BE REPRODUCED IN ANY MANNER NOR USED FOR ANY PURPOSE WHATSOEVER, EXCEPT AS SPECIFIED IN WRITING BY QORVO

SIZE	CAGE CODE	DWG. NO.	REV.
B	1CVM1	QPM2239-4000	A
SCALE: 1:1		SHEET 2 OF 3	

D

D

C

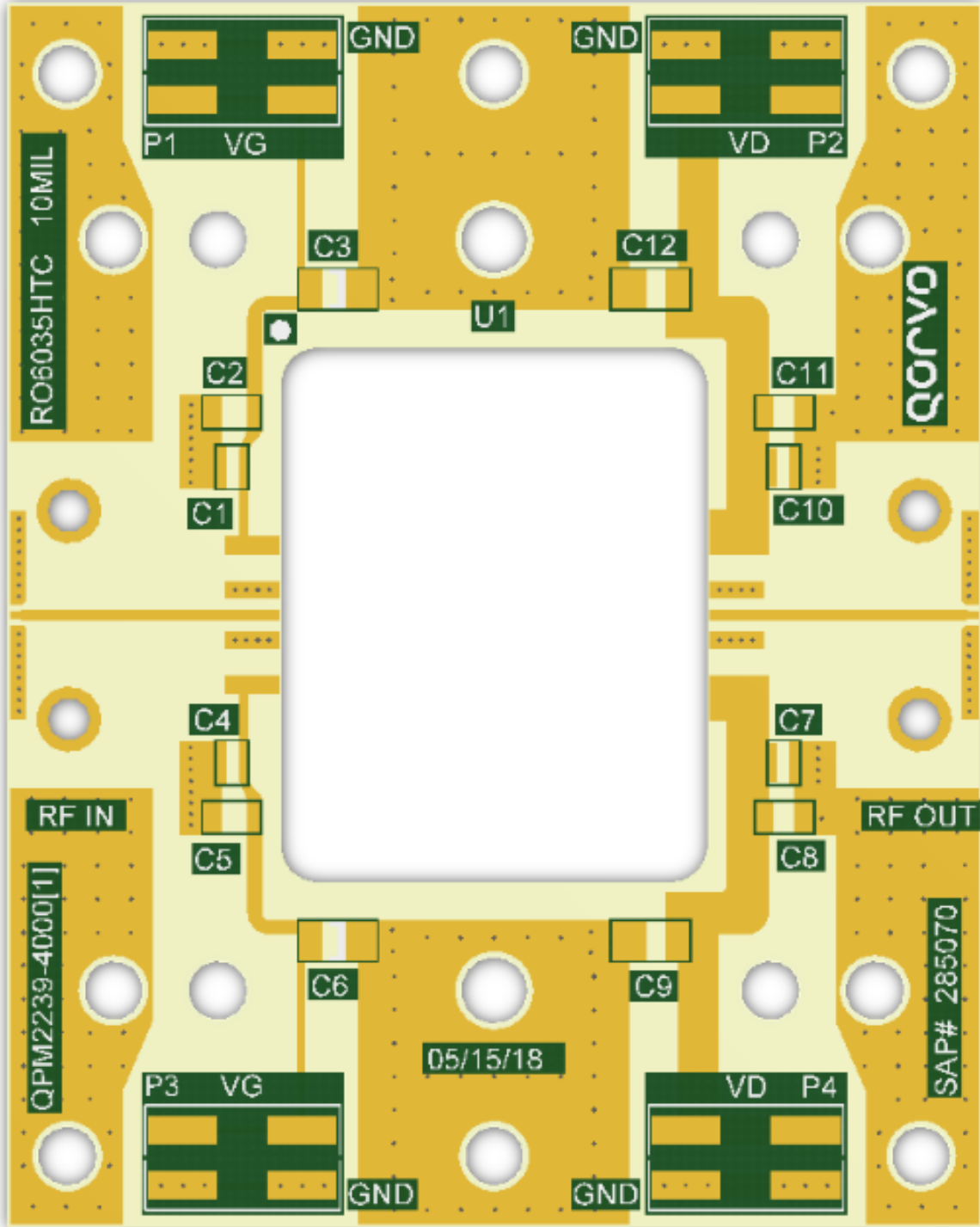
C

B

B

A

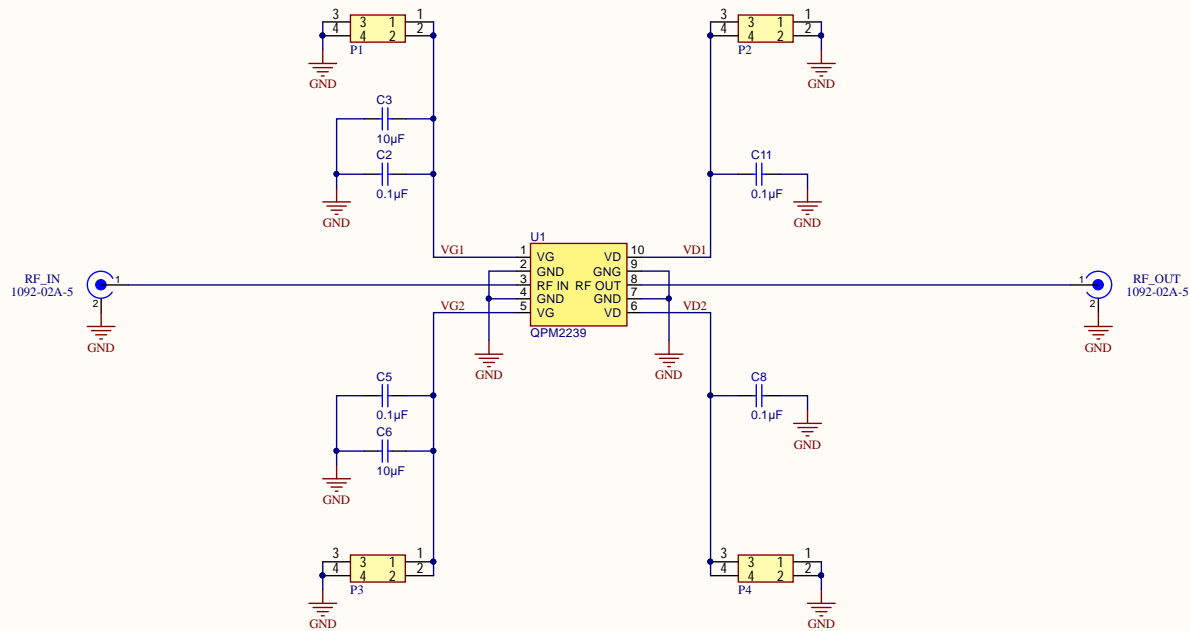
A



THIS DOCUMENT IS CONFIDENTIAL AND REPRESENTS
PROPRIETARY INFORMATION, THE PROPERTY OF QORVO
AND SHALL NOT BE REPRODUCED IN ANY MANNER
NOR USED FOR ANY PURPOSE WHATSOEVER,
EXCEPT AS SPECIFIED IN WRITING BY QORVO

SIZE	CAGE CODE	DWG. NO.	REV.
B	1CVM1	QPM2239-4000	A
SCALE: 1:1		SHEET 3 OF 3	

REVISION HISTORY			
REV	DESCRIPTION	DATE	APPROVAL
A	NEW RELEASE	05-15-18	A. BYRNE



SAP NO. 285070

APPROVAL AND RELEASE RECORDS MAINTAINED IN PDE		DATE
DESIGNER	T. THOMAS	05-15-18
ENGR.	Z. DU	05-15-18

PDE CONTROLLED

CAGE CODE 1CVM1



TITLE: PCB SCHEMATIC, QPM2239		
SIZE B	DWG. NO. QPM2239-4000	REV. A
SCALE: NTS		SHEET 1 OF 1

THIS DOCUMENT IS CONFIDENTIAL AND REPRESENTS PROPRIETARY INFORMATION, THE PROPERTY OF QORVO, AND SHALL NOT BE REPRODUCED IN ANY MANNER NOR USED FOR ANY PURPOSE WHATSOEVER, EXCEPT AS SPECIFIED IN WRITING BY QORVO.